

PIPE BEVELING MACHINE MF5i

Video of application



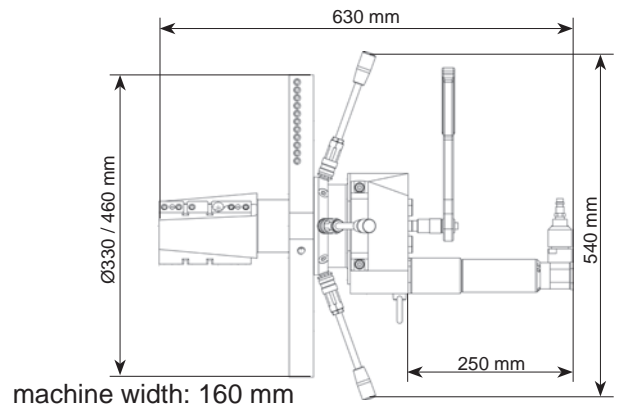
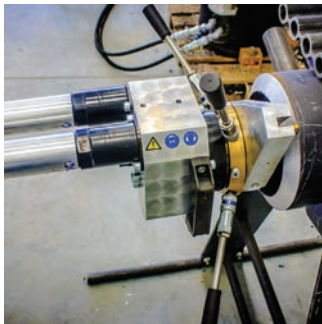
Pipe beveling machine MF5i

Working range ID-OD: 100 - 323,9 mm

The MF5i is designed for the preparation of pipe ends, branches and headers. It is used to process pipe walls, to cut pipes or chamfering of welds at steam bloc vessels. The machine is equipped with two compressed air motors. The clamping device of the machine is regulated by a ratchet and the feed device by a star handle.



Dimensions



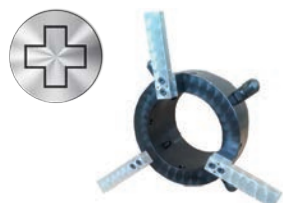
Specifications

Specifications MF5i			2 Pneumatic Motors		
Clamping range ID-ID	100 - 320 mm	3,937 - 12,598"	Power	1.700 W	2,4 HP
Working range ID-OD	100 - 323,9 mm	3,937 - 13,070"	Air pressure	6 bar	87 psi
Max. wall-thickness	30 mm	1,181"	Air consumption	1,92 m³/min	70,4 cfm
Feed	30 mm	1,181"	Air hose connection	3/8"	3/8"
Weight with electric motor	29,0 kg	72,75 lb	Features	Geschwindigkeitsregulierung	
Weight with pneumatic motor	23,8 kg	52,5 lb	Electric Motor		
Weld prep	facing, V-prep, J-prep, counter boring		Power consumption	2.200 W (110V/230V)	2,9 HP
Materials	steel, stainless steel, duplex, high alloyed		Hydraulic Motor		
Tooling	tool bits, TiN inserts, custom bits		Features	speed adjustment, torque control	
Machine body	Aluminium alloy		Power	8.000 W	10,7 HP
			Air pressure	140 bar	2030 psi
			Ölfluss	50 l/min	

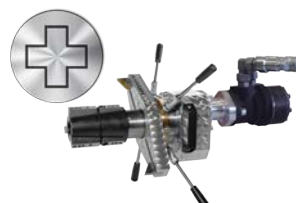
Accessories & additional options



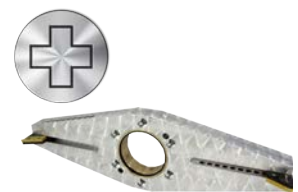
Tools for MF5i from page 48



Special tool for beveling elbows



Hydraulic driven machine



Enlargement XL to cover range 176-460 mm